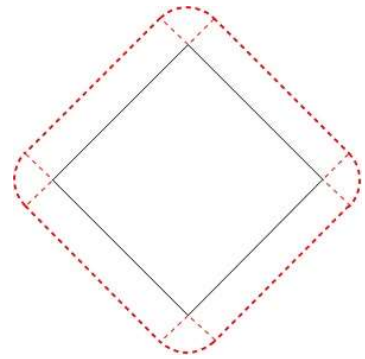
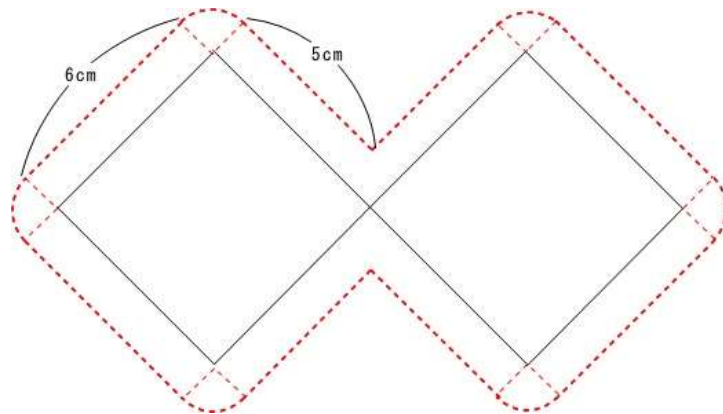


算数オンライン塾 5月16日の問題解説

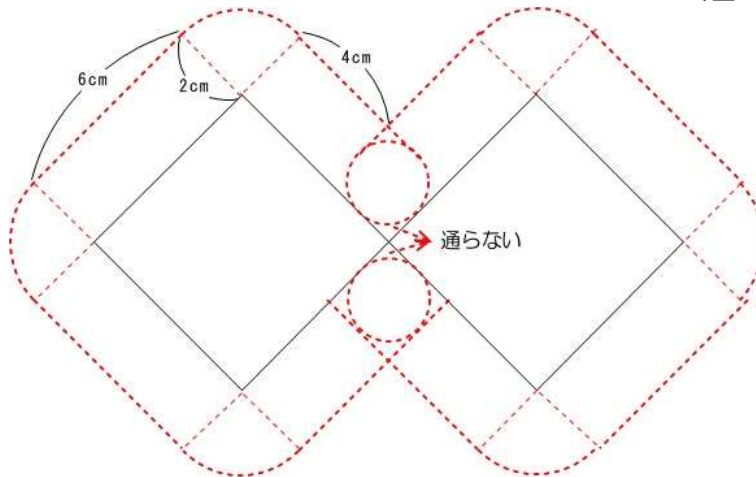
(1) 図の太い赤線部分になるので、
 $6 \times 4 + 1 \times 2 \times 3.14 = 24 + 6.28 = 30.28$



(答え) 30.28 cm



(2) 上図から
 $6 \times 4 + 5 \times 4 + 1 \times 2 \times 3.14 \div 4 \times 6 = 24 + 20 + 9.42 = 53.42$
 (答え) 53.42cm



(3)
 $6 \times 2 \times 4 + 2 \times 2 \times 3.14 \div 4 \times 6 + 4 \times 2 \times 4 + 2 \times 2 \times 2$
 $- (1 \times 1 - 1 \times 1 \times 3.14 \div 4) \times 2$
 $= 48 + 18.84 + 32 + 8 - 0.43 = 106.41$

(答え) 106.41cm²